

一. 区别声母, 韵母, 和整体认读音节

b p m f d t n l g k h j q x z c s zh ch sh r i y w



a o e i u ü


zi ci si zhi chi shi ri yi wu yu



二. 标声调



la bi

du shu

yu ci

xi gua

re cha

shuo hua

hua duo

三. 加声母



è	á



ī	i



ā	á



á	ǐ

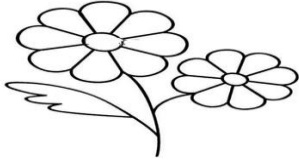
四. 加韵母



q	ch



x	g

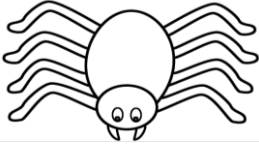


h	d



w	y

五. 看图填拼音



zhī zhū




lǐ wù




dí zi



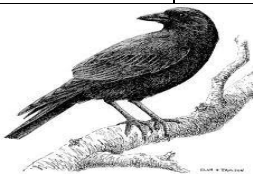

qì chē



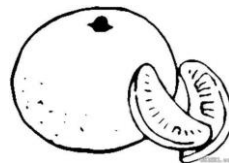

chú shī




yā lí

wū yā

jú zi


五. 给字选择正确的读音(choose the correct pinyin for the Chinese characters 10分)

四十

1. shí sì ( )

2. sì shí ( )

十五

1. shí wǔ ( )

2. wǔ shí ( )

火花

1. hǔo hūa( )

2. huǒ huā ( )

大鱼

1. dà yú ( )

2. dà yú ( )

日子

1. rì zi ( )

2. rì zhi ( )

子女

1. zǐ nǚ ( )

2. zǐ nǚ ( )

大米

1. dà mí ( )

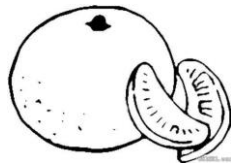
2. dà mǐ ( )

大火

1. dà hǔo ( )

2. dà huǒ ( )

六. 连线



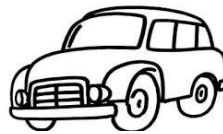
jú zi

bō luó

dà shù

zhú zi

luó bo



chú shī

rè chá

yá chǐ

qì chē

qí chē